



## Automation Components – Systems – Services

**PILZ**  
THE SPIRIT OF SAFETY

### Product overview

- Sensor technology ► Control technology ► Networks
- Drive technology ► Operator and visualisation systems
- Automation system PSS 4000 ► Software
- Consulting and engineering ► Training





Pilz is your solution supplier for all automation tasks. Including standard control functions. Pilz developments protect man, machine and the environment.

Pilz has a tradition as a family-run company stretching back over 60 years. Real proximity to customers is visible in all areas, instilling confidence through individual consultation, total flexibility and reliable service. Worldwide, round the clock, in 33 subsidiaries and branches, as well as 21 sales partners on every continent.

More than 2000 staff, each one of them an ambassador for safety, make sure that your staff – your company's most valuable asset – can work safely and free from injury.



Further information:  
[www.pilz.com](http://www.pilz.com) +  
Webcode: web0837

## SERVICES

Consulting, engineering  
and training

### Economical

Count on efficient production and  
the security of investment provided  
by our system solutions

**PILZ**  
THE SPIRIT OF SAFETY



Automation  
solutions from Pilz –  
at home in every  
industry.



The whole world of automation  
from one source.



### Overall solutions

Pilz developments protect man, machine and the environment. Our automation solutions incorporate our knowledge and experience from the stringent demands of safety technology, as well as the sum of our knowledge of general automation technology. We know about safety-related standards and directives worldwide, but that's not all. We also know how they can be implemented in every industry sector. Our experience has been gathered over decades, and you can use it for your competitive advantage.

All our experience and knowledge go into individual products and sophisticated system solutions.

- ▶ Sensor technology
- ▶ Control technology
- ▶ Networks
- ▶ Drive technology
- ▶ Operator and visualisation systems
- ▶ Software
- ▶ Automation system PSS 4000
- ▶ Consulting and engineering
- ▶ Training

### Benefit-oriented innovations

Our customer proximity is the basis for our innovative strength. We are always oriented towards current market requirements, which is why we can offer innovative automation solutions in every case.

Customer proximity and innovation belong together and are mutually dependent.

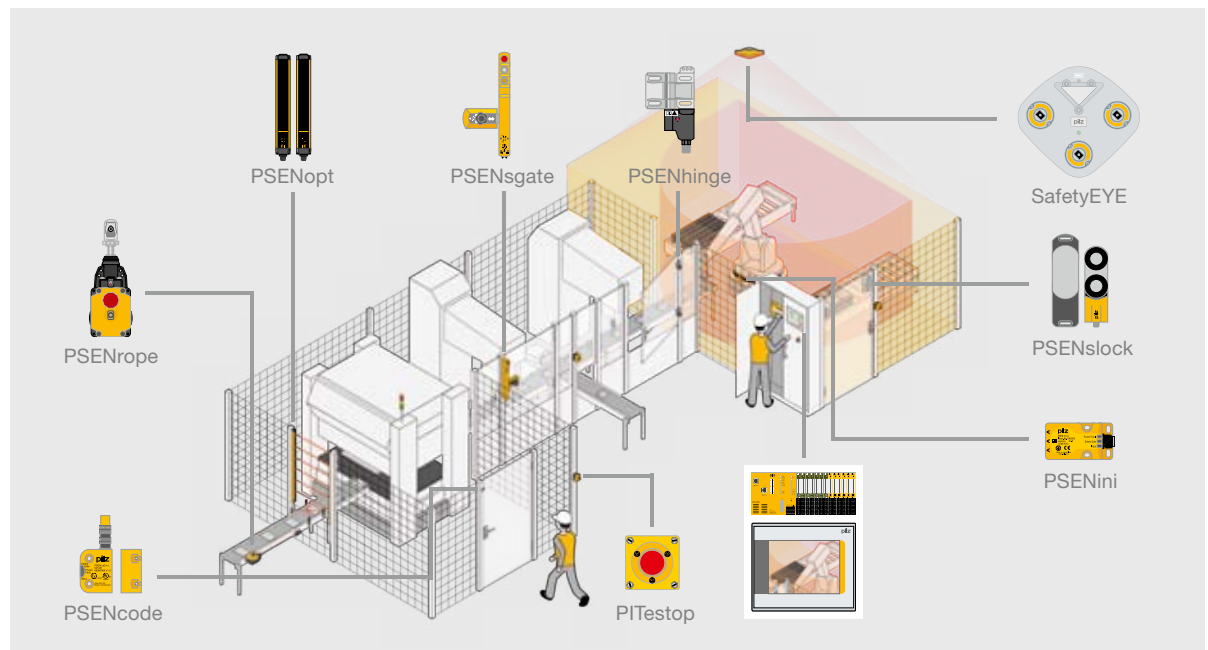
## ► Safe sensor technology

Reach the right product with just one click – the Pilz product finder:

Webcode:  
web99999

Online information at [www.pilz.com](http://www.pilz.com)

Pilz sensors PSEN guarantee that machinery and complex plants can be used efficiently while still complying with standards intended to protect man and machine. The versatile portfolio means that solutions can be individually tailored to each requirement: from position monitoring to three-dimensional zone monitoring.



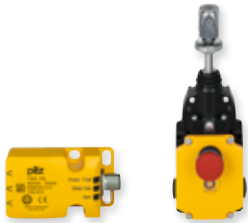
### Free choice for your application

Overall solutions and complete systems, including in conjunction with safe control technology, offer huge potential savings for your automation solution. And there are no limits: whether you have a small machine or a distributed plant – Pilz sensor technology fits perfectly into your plant environment. Compatibility and series connection with other sensors mean the solution is always economical.

While high plant efficiency is a requirement in an industrial environment, it's important not to neglect the protection of man, machine and the environment: from commissioning to high availability during operation. Pilz sensors PSEN provide a safe, flexible solution.

### Your benefits at a glance

- **Economical solutions:**  
Sensors from the various product ranges are compatible and can be connected in series
- **Investment protection:**  
Ideal for adding to the plant environment, easy to retrofit
- **Potential savings:**  
In configuration, design, documentation, purchasing and installation, due to ready-to-install systems and universal solutions



PSEnini PSEnRope

#### Position detection devices PSEnini and PSEnRope

– Safe proximity switches detect the approach of metallic objects without the use of contacts. Safe rope pull switches stop the process thanks to the rope-based E-STOP function.

Webcode web6252



PSEnMag PSEnCode

#### Safety switches PSEnMag and PSEnCode

– Various designs and operating principles: magnetic and coded safety switches offer economical series connection and maximum manipulation protection (PSEnCode).

Webcode web5179, web5184



PSEnMech PSEnBolt

#### Safety switch PSEnMech and safety bolt PSEnBolt

– The mechanical alternative for secure safety gate monitoring for personal and process protection. The safety bolt provides a complete solution comprising safety switch, handle and bolt.

Webcode web5174, web5191

The safe,  
complete  
solution:  
Sensor plus  
control  
technology

Comprehensive  
range of accesso-  
ries available in  
our E-Shop



PSEnLock PSEnGate

#### Safety gate systems PSEnLock and PSEnGate

– All the safety functions needed to monitor safety gates in the smallest possible space: one system provides safe position monitoring and guard locking – whether non-contact, magnetic or mechanical.

Webcode web5192

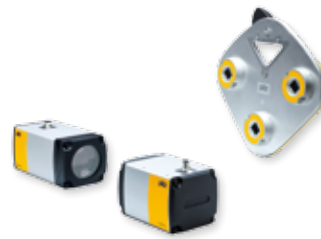


PSEnOpt

#### Light beam devices PSEnOpt

– Safeguard danger zones, where the production process requires active intervention. PSEnOpt provides finger, hand and body protection in accordance with EN/IEC 61496-1-2, as well as muting and blanking.

Webcode web5196



SafetyEYE and PSEnVip

#### Safe camera systems SafetyEYE and PSEnVip

– SafetyEYE for 3D zone monitoring and the camera-based protection system PSEnVip for monitoring and controlling press brakes.

Webcode web5585

Keep up-to-date  
on safe sensor  
technology  
from Pilz:



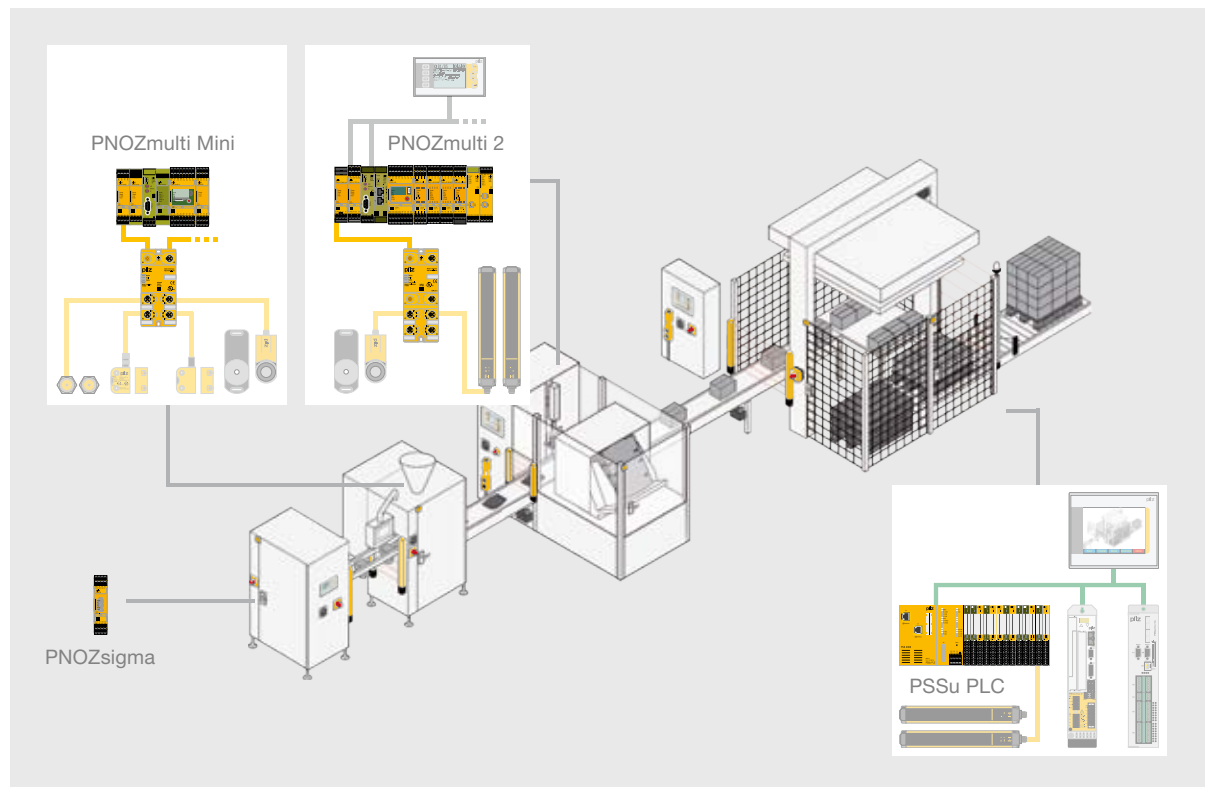
## ► Control technology

Reach the right product with just one click – the Pilz product finder:

Webcode:  
web99999

Online information at [www.pilz.com](http://www.pilz.com)

In the field of control technology, Pilz offers the right solution for every application. From stand-alone applications to networked and distributed systems for standard and safety applications. The portfolio comprises monitoring devices, a wide range of safety relays, configurable control systems, modular and compact, centralised control systems to completely decentralised systems – the right solution for every application.

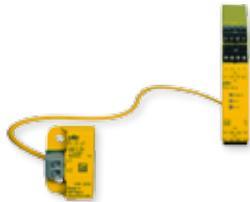


### Application versatility

Control technology is based on experience and innovation. We are continually expanding our product range in consultation with our customers. We supply components for simple monitoring of electrical variables such as true power or safety functions such as E-STOP or safety gate. This is how we enable implementation of standard and safety-related applications, through to complete control and monitoring of decentralised structures. Combine that with software and network components and you get complete automation architectures. Our products also comply with international standards and regulations.

### Your benefits at a glance

- **High flexibility:**  
The appropriate solution for each application
- **High plant availability:**  
Low downtimes for your plant or machinery thanks to user-friendly diagnostics
- **Faster commissioning:**  
e.g. due to devices with plug-in terminals or simple software solutions



PLIDdys in conjunction  
with PNOZelog

#### Line inspection devices PLIDdys

– Provide safe power-up on two-wire connections, providing maximum safety on long cable routes.

Webcode web6892



PMDsigma

#### Electronic monitoring relays PMD

– For monitoring electrical variables such as voltage or true power.

Webcode web5214



PNOZelog PNOZsigma PNOZ X

#### Safety relays PNOZ

– For monitoring machinery with up to three safety functions (e.g. emergency stop, safety gates etc.). There are different product ranges depending on the requirement.

Webcode web5513

Pilz control  
technology –  
For safety  
and automation

Comprehensive  
range of accesso-  
ries available in  
our E-Shop

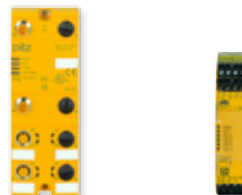


PNOZmulti PNOZmulti 2

#### Configurable control systems PNOZmulti

– Bridge the gap between classic safety relays and programmable control systems. The graphic software tool PNOZmulti Configurator offers high potential savings in engineering.

Webcode web10522



PDP67 F 8DI ION HP PDP20 F 4 mag

#### Decentralised modules PDP

– Are used for the economical decentralisation of your application. Modules to protection type IP20 (PDP20) and protection type IP67 (PDP67) are available.

Webcode web6557, web8459



PSSuniversal

#### Decentralised I/O system PSSuniversal

– Are used as remote I/O at field level and are the solution for tailor-made periphery expansion. Connection to a higher level control system is via common industrial communication protocols.

Webcode web5254

Keep  
up-to-date  
on control  
technology  
with Pilz:



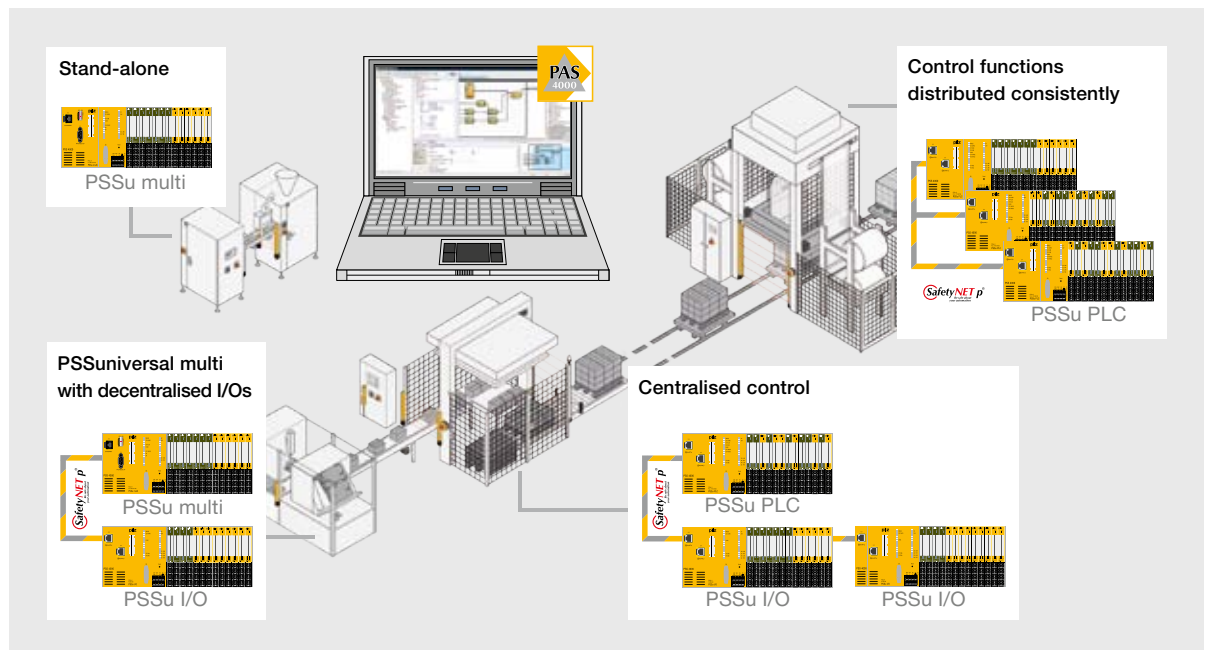
## ► Automation system PSS 4000

Reach the right product with just one click – the Pilz product finder:

Webcode:  
web99999

Online information at [www.pilz.com](http://www.pilz.com)

The automation system PSS 4000 consists of various hardware and software components, plus the real-time Ethernet SafetyNET p and corresponding network components. They are closely compatible, providing the ideal solution for your automation project. The automation system's innovative software platform PAS4000 manages all the editors and makes the system easier to handle.



### Simple programming – for safety and automation

In the software platform PAS4000, the tools for configuration, programming, commissioning and operation are closely compatible. The data interfaces are standardised, making information easier to exchange. You can quickly and intuitively create programs for safety-related and automation functions. The graphics Program Editor PASmulti is available along with the editors PAS STL (Structured Text), PAS IL (Instruction List) and PAS LD (Ladder Diagram) in accordance with EN/IEC 61131-3. Safety and automation are merged intelligently in the process. Whether you are working on the basis of the EN/IEC 61131-3 instruction set, using the graphics Program Editor PASmulti or combining the two methods.

### Your benefits at a glance

- **Distributed system:**  
Central editing,  
with reduced complexity
- **No interface problems:**  
Simple data exchange  
between control systems
- **Simple software tools:**  
Simple, identical handling of  
software tools
- **Reusability:**  
High level of reusability in  
hardware and software

### Consistent distribution of control functions

The automation system PSS 4000 enables the consistent distribution of control functions. Process and control data, failsafe data and diagnostic information are exchanged and synchronised via Ethernet. Instead of a centralised control system, a user program distributed in runtime is made available to the user within a centralised project. All network subscribers are configured, programmed and diagnosed via this centralised project.

**Automation system PSS 4000 – Simplify your Automation™**



PSSUniversal PLC

#### Control systems PSSUniversal

– Available for the most diverse applications. They can be specially tailored to the application in combination with I/O modules. The control systems PSSUniversal multi are suitable for machines and small plants. The PLC control systems PSSUniversal PLC can be used for interlinked, complex plants. They also possess special functions such as safe motion monitoring.

Webcode web6386



PSSnet SHL

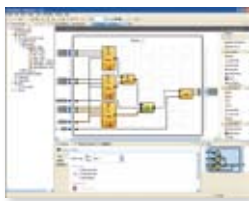
PSSnet SLL

#### System components PSSnet

– Suitable for implementing the widest range of automation architectures for Ethernet-based communication systems. Increased network availability and network extension are guaranteed. The network components are used in the real-time Ethernet SafetyNET p, the backbone of PSS 4000.

Webcode web6548

Comprehensive range of accessories available in our E-Shop



PASmulti

#### Software platform PAS4000

– Contains various editors and blocks. The tools for configuration, programming, commissioning and operation are closely compatible. The editors Instruction List, Structured Text and Ladder Diagram are available for PLC programming (for safety and automation) along with the Program Editor PASmulti.

Webcode web6386



PASvisu

#### Visualisation software PASvisu

– Optimum link: Control project and visualisation: The web-based visualisation software PASvisu enables simple configuration and visualisation. You can link your PAS4000 control project directly to the PASvisu Builder project. As a result you automatically receive full access to all the process variables created as well as to the complete namespace of the PSS 4000.

Webcode web77550

Keep up-to-date on the automation system PSS 4000 from Pilz:



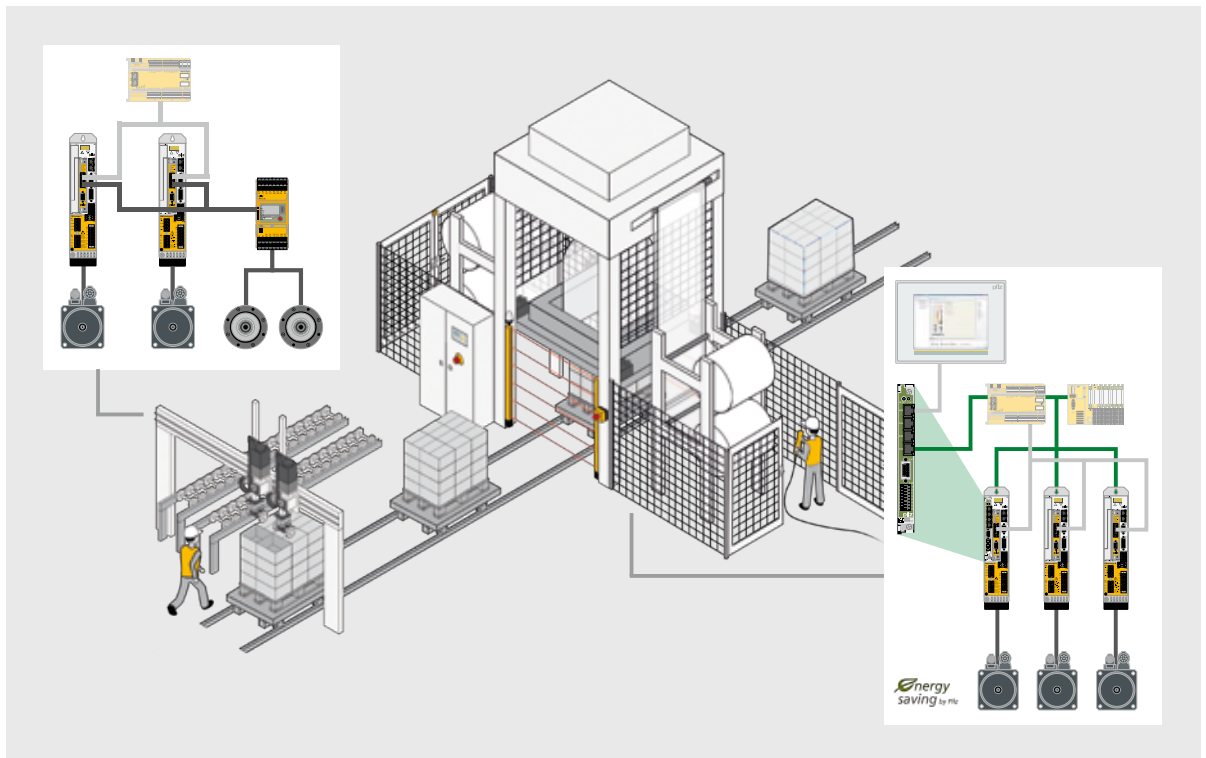
## ► Drive technology

Reach the right product with just one click – the Pilz product finder:

Webcode:  
web99999

Online information at [www.pilz.com](http://www.pilz.com)

Pilz Motion Control provides overall and energy-efficient solutions for your machine automation. The portfolio comprises both individual components and complete solutions: from motion control systems and servo amplifiers to servo motors, including all safety aspects. Pilz drive technology is embedded into the relevant system environment – whether a new structure or a retrofit – and open for a variety of interfaces and functionalities.



### For a wide range of applications

Use the drive technology PMC for the most varied applications: The safe motion solution is also suitable for servo presses, for example. Functions such as “Safely Limited Speed” in set-up mode, “Safe Direction” during the light grid’s muting phase and “Safe Brake Control” on vertical axes enable operators to work safely within the danger zone.

Thanks to the intelligent motion control system short scan times are achieved and various motion sequences are ideally synchronised. With the intuitive operation of the software PMCTools, you profit from simple parameter setting and diagnostics.

### Your benefits at a glance

- **Safe:** up to PL e for each piece of feedback
- **Energy efficient:** high energy savings thanks to efficient servo technology
- **Open:** highly flexible because various fieldbus/feedback systems and functionalities can be used
- **Productive:** short cycle times enable high performance



PMCprimo DriveP

### Control systems PMCprimo

– Used for all types of motion and control tasks and consist of PLC and motion technology.

Webcode web5531



PM Ctendo DD5 PMCprotego D

### Servo amplifiers PM Ctendo DD5 and PMCprotego D

– Suitable as drive controllers for the widest range of motor technologies: from servo motors to asynchronous and linear motors.

Webcode web5270



PM Ctendo

### Servo motors PM Ctendo SZ

– Provide the right motor to meet your requirements, whether the focus is on dimensions, dynamics, controllability, connection types or feedback systems.

Webcode web5284

**Pilz drive technology – Safe, energy efficient, open, productive**

Comprehensive range of accessories available in our E-Shop



PMCprotego DS

### Safe motion

– Combines the safety card PMCprotego S and servo amplifier PMCprotego D. Safe functions help to reduce setup times and maintenance work and increase productivity.

Webcode web5263



Safe Torque Off (STO)



Safe Direction (SDI)



Safe Stop 1 (SS1)



Safely Limited Position (SLP)



Safe Stop 2 (SS2)



Safely Limited Increment (SLI)



Safe Operating Stop (SOS)



Safe Brake Control (SBC)



Safely Limited Speed (SLS)



Safe Brake Test (SBT)



Safe Speed Range (SSR)

Keep up-to-date on drive technology from Pilz:



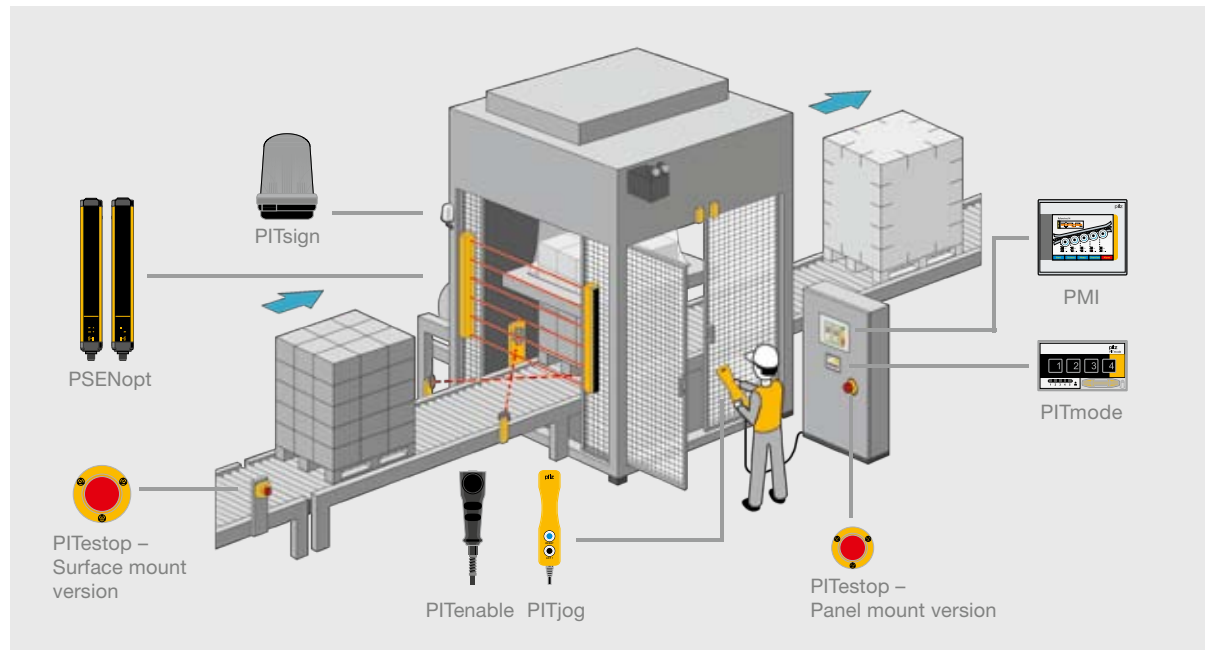
## ► Operator and visualisation systems

Reach the right product with just one click – the Pilz product finder:

Webcode:  
web99999

Online information at [www.pilz.com](http://www.pilz.com)

Operator and visualisation systems enable short reaction times through control and signal devices, as well as rapid diagnostics via visualisation systems. As the ideal supplement for other Pilz products, your plant is completed reliably and in compliance with the standards.



### Control and signal devices PIT – All-round safety

Selection of the correct control and signal devices is a key factor for the safety of man and machine. Rely on a safe solution with standard-compliant emergency stop pushbuttons, muting lamps, manually operated control devices and operating mode selector switches from Pilz.

### Operator terminals PMI – Simple, professional

Systems for process visualisation and interaction between man and machine form the link between operator and machine. When an error occurs, diagnostics on the plant and machinery have a special role to play. Good visualisation and diagnostics also mean shorter downtimes and therefore increased cost effectiveness.

### Your benefits at a glance

#### ► Control and signal devices

- **Quick, easy installation:**  
Due to push-in technology

- **Increased operational safety:**

Thanks to monitored contact blocks

#### ► Operator terminals

- **Flexible application:**  
Variety of hardware and software, numerous display sizes

- **Complete tool:**  
For diagnostics and visualisation



PITestop

#### Emergency stop pushbuttons PITestop

– Different versions, e.g. illuminated or with key, ensure the safety of man and machine in emergency stop equipment.

Webcode web5294



PITsign

#### Muting lamps PITsign

– Indicate that electrosensitive protective equipment is also suspended in accordance with IEC 61496-1, even during muting.

Webcode web5298



PITjog

#### Manually operated control devices PITjog

– Are used if the effect of safety equipment has to be completely or partially suspended (two-hand operation).

Webcode web5302

Operator and  
visualisation  
systems from Pilz  
– Professional  
operating and  
monitoring

Comprehensive  
range of accesso-  
ries available in  
our E-Shop



PITenable

#### Enabling switches PITenable

– Are used as manually operated control devices for working with an open safety gate (one-handed operation).

Webcode web6676



PITmode

#### Operating mode selector switches PITmode

– Offer two functions: selection of operating mode and authorisation control for machine access.

Webcode web6422



PMI

#### Operator terminals PMI

– With resistive touch display from 3.5" to 15" for operation and monitoring of technical processes.

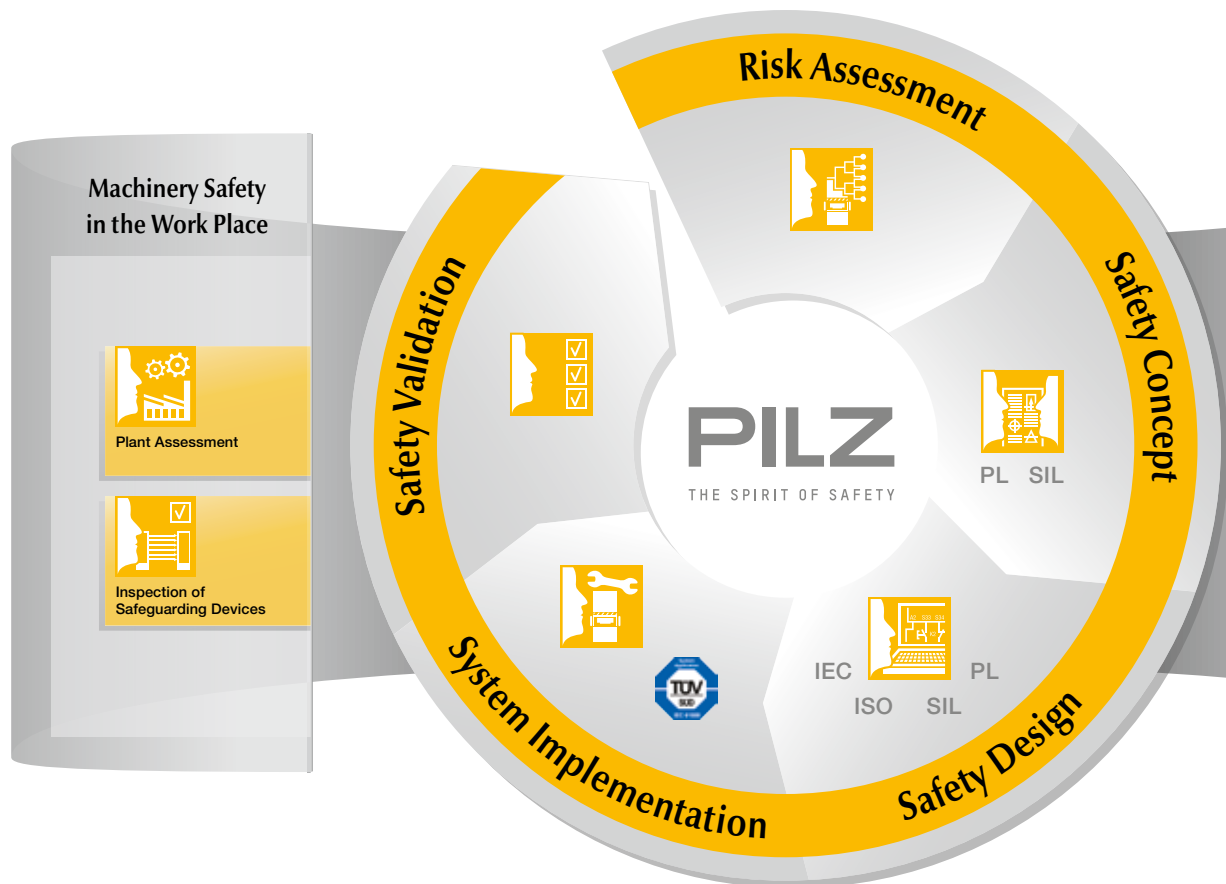
Webcode web5306

Keep up-to-date  
on operator  
terminals PMI  
with Pilz:



## ► Consulting, engineering and training

As a solution supplier, Pilz can help you to apply optimum safety strategies worldwide. Services encompass the whole machine lifecycle. Our training package with practical, up-to-date course content completes the range.



Keep up-to-date  
on Pilz safety  
services:



Webcode:  
web7764

Online information  
at [www.pilz.com](http://www.pilz.com)

### Risk Assessment

We inspect your machines in accordance with the applicable standards and/or international standards and directives and assess the existing hazards.

### Safety Design

The aim of the Safety Design is to reduce or eliminate danger points through detailed planning of the necessary safeguards.

### Safety Concept

We develop detailed technical solutions for the safety of your plant and machinery through mechanical, electronic and organisational measures.

### System Implementation

The results from the Risk Assessment and Safety Design are implemented through selected, tailor-made safety measures.

## Machinery Compliance and Certification



### International Compliance Services

We perform the assessment procedure and develop the necessary strategies to enable compliance with the respective ISO, IEC, ANSI, EN or other national or international standards.

### Plant Assessment

We develop an overview of your entire plant in the shortest possible time. We use an on-site inspection to expose the risks and calculate the cost of optimising your safeguards.

### Inspection of Safeguarding Devices

With our independent, ISO/IEC 17020-compliant inspection body, which is accredited by the German Accreditation Body (DAkkS), we can guarantee objectivity and high availability of your machines.



Pilz GmbH & Co. KG, Ostfildern, operates an independent inspection body in accordance with DIN EN ISO/IEC 17020:2012 for the plant and machinery sector, accredited by the German Accreditation Body (DAkkS).



Our management system was certified in the field of system integration to EN/IEC 61508.

### Safety Validation

The Risk Assessment and the Safety Concept are mirrored and examined by competent specialist staff in the Safety Validation.

### Training

Pilz offers two types of training: product-neutral seminars on machinery safety and specific product courses. We pass on professional expertise in a practical, understandable format.

### CMSE® – Certified Machinery Safety Expert



CMSE® is the international qualification in the field of machinery safety. Successful participants receive an internationally recognised certificate issued by TÜV Nord.

Webcode:  
web0318

Online information  
at [www.pilz.com](http://www.pilz.com)

## ► PAScal Safety Calculator

The product-independent software tool calculates and verifies the key safety parameters such as Performance Level (PL) and Safety Integrity Level (SIL) for safety functions.

### Calculation software for verifying functional safety

The PAScal Safety Calculator calculates the PL (Performance Level) and SIL (Safety Integrity Level) achievable for safety functions on plant and machinery depending on the components used. The result is verified with the required PL in accordance with EN ISO 13849 or SIL in accordance with EN/IEC 62061 and any actions that are required are listed. PAScal supports the VDMA 66413 library format. This guarantees that data is displayed in a standardised format across a range of manufacturers. PAScal has been certified by TÜV SÜD.

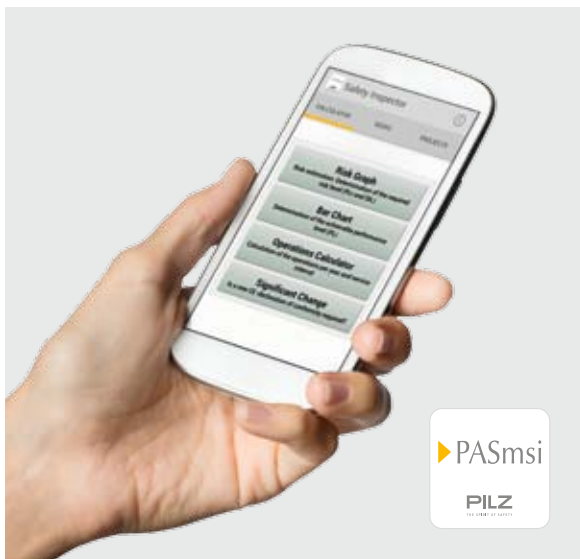


Keep up-to-date  
on Safety  
Calculator  
PAScal with Pilz:



Webcode:  
web10255

Online information  
at [www.pilz.com](http://www.pilz.com)



### Mobile support during risk assessment now also available

Download PASmsi now in the App Store and begin the mobile verification of your machine's safety functions.

Three of many functions:

- Risk estimation: Determination of the risk level (PL and SIL)
- Calculation of the number of operations and service interval
- Always up-to-date with Pilz standard news

## ► Pilz at home in every industry

Pilz provides the worldwide, safe standard for your applications in every industry. Pilz has extensive expertise in a wide range of applications. We'll work with you to implement an optimum automation solution, taking into account the standards and directives applicable worldwide.



### **Railway and transport technology – Industrial safety technology on railways**

As a company that operates internationally as a technology leader, Pilz has many decades of experience in the field of safe automation. The highly sensitive and heavily safety-relevant railway sector benefits from this experience and from the use of proven industrial automation products.



### **Wind energy – Safe, efficient automation of wind turbines**

Pilz provides solutions for monitoring all the relevant safety functions on wind turbines. Even on a wind turbine, the protection of man and machine is absolutely indispensable. We provide solutions for safe speed monitoring on the rotor and generator shaft, for example.



### **Metalworking/presses – Safety-related equipment, upgrade and operation of presses**

Reliable safety technology for presses should not only be flexible and powerful, but economical too. We can help you to equip and retrofit your presses safely and guarantee safe operation. As an experienced partner, we can guide you through a new design and retrofit over the entire machine lifecycle.



### **Packaging technology – Economical, flexible solutions**

In practice it comes down to the harmonisation of safety and automation, particularly when the machine needs to be fitted or maintained. It's essential to have a safety concept for your packaging machines and to select the right safe sensors, control systems and drives, including the appropriate software for machine diagnostics and maintenance.

Keep up-to-date on  
industry solutions  
from Pilz:



Webcode:  
web0683

Online information  
at [www.pilz.com](http://www.pilz.com)

Of course Pilz also has extensive expertise in many other fields in addition to these industries. We'd be happy to discuss your individual projects and requirements.



### Pilz automation solutions – All in One: Safety & Automation

Pilz offers you solutions for complete automation. From sensor technology to control and drive technology – with safety and automation included. On all components and systems, simple commissioning, simple handling and simple diagnostics play an important role!

Profit from flexible automation solutions for small machines or even large, networked plants. Regardless of whether you want to standardise your safety, implement safety and automation in the periphery or are looking for the solution for complete automation.

Pilz solutions are embedded into the relevant system environment –

whether a new structure or a retrofit – and open for a variety of interfaces and functionalities.

### The perfect combination:

**Control technology** enables numerous application options, including monitoring of electrical and functional safety, through to complete machine control.



## All in One: Safety & Automation

- ▶ Full diagnostic options for reduced machine downtimes
- ▶ Open communication for high flexibility
- ▶ Innovative software solutions for easy configuration, programming and visualisation
- ▶ High scalability for individual solutions
- ▶ One system for safety and automation



In combination with the various control systems, safe **sensors** and **decentralised modules** guarantee the efficient use of plant and machinery in compliance with standards. Ready-to-install systems and universally compatible solutions offer high potential savings.

In the area of **drive technology**, the offer includes drive-integrated

safety functions, safe logic functions and the connection of visualisation, sensor and actuator technology.

Your plant or machinery are completed with **operator and graphics devices** from Pilz.

Design, programming, configuration, commissioning, diagnostics and visualisation can be achieved

quickly and simply using Pilz **automation software**.

Pilz offers scalable solutions to suit each requirement – from sensor technology to control and drive technology.

## Contact

### AT

Pilz Ges.m.b.H.  
Sichere Automation  
Modecenterstraße 14  
1030 Wien  
Austria  
Telephone: +43 1 7986263-0  
Telefax: +43 1 7986264  
E-Mail: [pilz@pilz.at](mailto:pilz@pilz.at)  
Internet: [www.pilz.at](http://www.pilz.at)

### AU

Pilz Australia  
Safe Automation  
Unit 1, 12-14 Miles Street  
Mulgrave  
Victoria 3170  
Australia  
Telephone: +61 3 95600621  
Telefax: +61 3 95749035  
E-Mail: [safety@pilz.com.au](mailto:safety@pilz.com.au)  
Internet: [www.pilz.com.au](http://www.pilz.com.au)

### BE, LU

Pilz Belgium  
Safe Automation  
Bijenstraat 4  
9051 Gent (Sint-Denijs-Westrem)  
Belgium  
Telephone: +32 9 3217570  
Telefax: +32 9 3217571  
E-Mail: [info@pilz.be](mailto:info@pilz.be)  
Internet: [www.pilz.be](http://www.pilz.be)

### BR

Pilz do Brasil  
Automação Segura  
Av. Piraporinha, 521  
Bairro: Planalto  
São Bernardo do Campo – SP  
CEP: 09891-000  
Brazil  
Telephone: +55 11 4126-7290  
Telefax: +55 11 4942-7002  
E-Mail: [pilz@pilz.com.br](mailto:pilz@pilz.com.br)  
Internet: [www.pilz.com.br](http://www.pilz.com.br)

### CA

Pilz Automation Safety Canada L.P.  
250 Bayview Drive  
Barrie, Ontario  
Canada, L4N 4Y8  
Telephone: +1 705 481-7459  
Telefax: +1 705 481-7469  
E-Mail: [info@pilz.ca](mailto:info@pilz.ca)  
Internet: [www.pilz.ca](http://www.pilz.ca)

### CH

Pilz Industrieelektronik GmbH  
Gewerbepark Hintermättli  
5506 Mägenwil  
Switzerland  
Telephone: +41 62 88979-30  
Telefax: +41 62 88979-40  
E-Mail: [pilz@pilz.ch](mailto:pilz@pilz.ch)  
Internet: [www.pilz.ch](http://www.pilz.ch)

### CN

Pilz Industrial Automation  
Trading (Shanghai) Co., Ltd.  
Rm. 1702-1704  
Yongda International Tower  
No. 2277 Long Yang Road  
Shanghai 201204  
China  
Telephone: +86 21 60880878  
Telefax: +86 21 60880870  
E-Mail: [sales@pilz.com.cn](mailto:sales@pilz.com.cn)  
Internet: [www.pilz.com.cn](http://www.pilz.com.cn)

### CZ

Pilz Czech s.r.o.  
Safe Automation  
Zelený pruh 1560/99  
140 00 Praha 4  
Czech Republic  
Telephone: +420 222 135353  
Telefax: +420 296 374788  
E-Mail: [info@pilz.cz](mailto:info@pilz.cz)  
Internet: [www.pilz.cz](http://www.pilz.cz)

### DE

Pilz GmbH & Co. KG  
Felix-Wankel-Straße 2  
73760 Ostfildern  
Germany  
Telephone: +49 711 3409-0  
Telefax: +49 711 3409-133  
E-Mail: [info@pilz.de](mailto:info@pilz.de)  
Internet: [www.pilz.de](http://www.pilz.de)

### DK

Pilz Skandinavien K/S  
Safe Automation  
Ellegaardvej 25 L  
6400 Sønderborg  
Denmark  
Telephone: +45 74436332  
Telefax: +45 74436342  
E-Mail: [pilz@pilz.dk](mailto:pilz@pilz.dk)  
Internet: [www.pilz.dk](http://www.pilz.dk)

### ES

Pilz Industrieelektronik S.L.  
Safe Automation  
Camí Ral, 130  
Polígono Industrial Palou Nord  
08401 Granollers  
Spain  
Telephone: +34 938497433  
Telefax: +34 938497544  
E-Mail: [pilz@pilz.es](mailto:pilz@pilz.es)  
Internet: [www.pilz.es](http://www.pilz.es)

### FI

Pilz Skandinavien K/S  
Safe Automation  
Nuijamiestentie 7  
00400 Helsinki  
Finland  
Telephone: +358 10 3224030  
Telefax: +358 9 27093709  
E-Mail: [pilz.fi@pilz.dk](mailto:pilz.fi@pilz.dk)  
Internet: [www.pilz.fi](http://www.pilz.fi)

### FR

Pilz France Electronic  
1, rue Jacob Mayer  
CS 80012  
67037 Strasbourg Cedex 2  
France  
Telephone: +33 3 88104000  
Telefax: +33 3 88108000  
E-Mail: [siege@pilz-france.fr](mailto:siege@pilz-france.fr)  
Internet: [www.pilz.fr](http://www.pilz.fr)

### GB

Pilz Automation Ltd  
Pilz House  
Little Colliers Field  
Corby, Northants  
NN18 8TJ  
United Kingdom  
Telephone: +44 1536 460766  
Telefax: +44 1536 460866  
E-Mail: [sales@pilz.co.uk](mailto:sales@pilz.co.uk)  
Internet: [www.pilz.co.uk](http://www.pilz.co.uk)

### IE

Pilz Ireland Industrial Automation  
Cork Business and Technology Park  
Model Farm Road  
Cork  
Ireland  
Telephone: +353 21 4346535  
Telefax: +353 21 4804994  
E-Mail: [sales@pilz.ie](mailto:sales@pilz.ie)  
Internet: [www.pilz.ie](http://www.pilz.ie)

### Headquarters:

Pilz GmbH & Co. KG, Felix-Wankel-Straße 2, 73760 Ostfildern, Germany  
Telephone: +49 711 3409-0, Telefax: +49 711 3409-133, E-Mail: [info@pilz.de](mailto:info@pilz.de), Internet: [www.pilz.com](http://www.pilz.com)

**IN**

Pilz India Pvt Ltd.  
Office No 202, Delite Square  
Near Aranyeshwar Temple  
Sahakar Nagar No 1  
Pune 411009  
India  
Telephone: +91 20 2421399-4/-5  
Telefax: +91 20 2421399-6  
E-Mail: [info@pilz.in](mailto:info@pilz.in)  
Internet: [www.pilz.in](http://www.pilz.in)

**IT, MT**

Pilz Italia S.r.l.  
Automazione sicura  
Via Gran Sasso n. 1  
20823 Lentate sul Seveso (MB)  
Italy  
Telephone: +39 0362 1826711  
Telefax: +39 0362 1826755  
E-Mail: [info@pilz.it](mailto:info@pilz.it)  
Internet: [www.pilz.it](http://www.pilz.it)

**JP**

Pilz Japan Co., Ltd.  
Safe Automation  
Ichigo Shin-Yokohama Bldg. 4F  
3-17-5 Shin-Yokohama  
Kohoku-ku  
222-0033 Yokohama  
Japan  
Telephone: +81 45 471-2281  
Telefax: +81 45 471-2283  
E-Mail: [pilz@pilz.co.jp](mailto:pilz@pilz.co.jp)  
Internet: [www.pilz.jp](http://www.pilz.jp)

**KR**

Pilz Korea Ltd.  
Safe Automation  
22F Keumkang  
Penterium IT Tower Unit B  
810 Gwanyang-dong, Dongan-gu  
Anyang-si, Gyeonggi-do, 431-060  
South Korea  
Telephone: +82 31 450 0677  
Telefax: +82 31 450 0670  
E-Mail: [info@pilzkorea.co.kr](mailto:info@pilzkorea.co.kr)  
Internet: [www.pilz.co.kr](http://www.pilz.co.kr)

**MX**

Pilz de México, S. de R.L. de C.V.  
Automatización Segura  
Convento de Actopan 36  
Jardines de Santa Mónica  
Tlalnepantla, Méx. 54050  
Mexico  
Telephone: +52 55 5572 1300  
Telefax: +52 55 5572 1300  
E-Mail: [info@pilz.com.mx](mailto:info@pilz.com.mx)  
Internet: [www.pilz.mx](http://www.pilz.mx)

**NL**

Pilz Nederland  
Veilige automatisering  
Havenweg 22  
4131 NM Vianen  
Netherlands  
Telephone: +31 347 320477  
Telefax: +31 347 320485  
E-Mail: [info@pilz.nl](mailto:info@pilz.nl)  
Internet: [www.pilz.nl](http://www.pilz.nl)

**NZ**

Pilz New Zealand  
Safe Automation  
Unit 4, 12 Laidlaw Way  
East Tamaki  
Auckland 2016  
New Zealand  
Telephone: +64 9 6345350  
Telefax: +64 9 6345352  
E-Mail: [office@pilz.co.nz](mailto:office@pilz.co.nz)  
Internet: [www.pilz.co.nz](http://www.pilz.co.nz)

**PL**

Pilz Polska Sp. z o.o.  
Safe Automation  
ul. Ruchliwa 15  
02-182 Warszawa  
Poland  
Telephone: +48 22 8847100  
Telefax: +48 22 8847109  
E-Mail: [info@pilz.pl](mailto:info@pilz.pl)  
Internet: [www.pilz.pl](http://www.pilz.pl)

**PT**

Pilz Industrielektronik S.L.  
R. Eng Duarte Pacheco, 120  
4 Andar Sala 21  
4470-174 Maia  
Portugal  
Telephone: +351 229407594  
E-Mail: [pilz@pilz.pt](mailto:pilz@pilz.pt)  
Internet: [www.pilz.pt](http://www.pilz.pt)

**RU**

Pilz RUS OOO  
Ugreshskaya street, 2,  
bldg. 11, office 16 (1st floor)  
115088 Moskau  
Russian Federation  
Telephone: +7 495 665 4993  
E-Mail: [pilz@pilzrussia.ru](mailto:pilz@pilzrussia.ru)  
Internet: [www.pilzrussia.ru](http://www.pilzrussia.ru)

**SE**

Pilz Skandinavien K/S  
Safe Automation  
Energigatan 10 B  
43437 Kungsbacka  
Sweden  
Telephone: +46 300 13990  
Telefax: +46 300 30740  
E-Mail: [pilz.se@pilz.dk](mailto:pilz.se@pilz.dk)  
Internet: [www.pilz.se](http://www.pilz.se)

**SG**

Pilz South East Asia Pte. Ltd.  
# 02-06 German Centre  
25 International Business Park  
Singapore 609916  
Singapore  
E-Mail: [sales@pilz.sg](mailto:sales@pilz.sg)  
Internet: [www.pilz.sg](http://www.pilz.sg)

**SK**

Pilz Slovakia s.r.o.  
Štúrova 101  
05921 Svit  
Slovakia  
Telephone: +421 52 7152601  
E-Mail: [info@pilzslovakia.sk](mailto:info@pilzslovakia.sk)  
Internet: [www.pilzslovakia.sk](http://www.pilzslovakia.sk)

**TR**

Pilz Emniyet Otomasyon  
Ürünleri ve Hizmetleri Tic. Ltd. Şti.  
Kayışdağı Mahallesi Dudullu Yolu Cad.  
Mecun Sok. Duru Plaza No:7  
34755 Ataşehir/İstanbul  
Turkey  
Telephone: +90 216 5775550  
Telefax: +90 216 5775549  
E-Mail: [info@pilz.com.tr](mailto:info@pilz.com.tr)  
Internet: [www.pilz.com.tr](http://www.pilz.com.tr)

**TW**

Pilz Taiwan Ltd.  
7F.-3, No. 146, Songjiang Rd.  
Zhongshan Dist., Taipei City 104  
Taiwan  
Telephone: +886 2 2568 1680  
Telefax: +886 2 2568 1600  
E-Mail: [info@pilz.tw](mailto:info@pilz.tw)  
Internet: [www.pilz.tw](http://www.pilz.tw)

**US**

Pilz Automation Safety L.P.  
7150 Commerce Boulevard  
Canton  
Michigan 48187  
USA  
Telephone: +1 734 354 0272  
Telefax: +1 734 354 3355  
E-Mail: [info@pilzusa.com](mailto:info@pilzusa.com)  
Internet: [www.pilz.us](http://www.pilz.us)

# ► Support

Technical support is available from Pilz round the clock.

## Americas

### Brazil

+55 11 97569-2804

### Canada

+1 888-315-PILZ (315-7459)

### Mexico

+52 55 5572 1300

### USA (toll-free)

+1 877-PILZUSA (745-9872)

## Asia

### China

+86 21 60880878-216

### Japan

+81 45 471-2281

### South Korea

+82 31 450 0680

## Australia

+61 3 95600621

## Europe

### Austria

+43 1 7986263-0

### Belgium, Luxembourg

+32 9 3217575

### France

+33 3 88104000

### Germany

+49 711 3409-444

### Ireland

+353 21 4804983

### Italy, Malta

+39 0362 1826711

## Scandinavia

+45 74436332

## Spain

+34 938497433

## Switzerland

+41 62 88979-30

## The Netherlands

+31 347 320477

## Turkey

+90 216 5775552

## United Kingdom

+44 1536 462203

**You can reach our  
international hotline on:**

+49 711 3409-444

support@pilz.com

Pilz develops environmentally-friendly products using ecological materials and energy-saving technologies. Offices and production facilities are ecologically designed, environmentally-aware and energy-saving. So Pilz offers sustainability, plus the security of using energy-efficient products and environmentally-friendly solutions.

*Energy  
saving by Pilz*



Presented by:



In many countries we are represented by sales partners. Please refer to our homepage [www.pilz.com](http://www.pilz.com) for further details or contact our headquarters.

**PILZ**  
THE SPIRIT OF SAFETY

7-4-2-3-014, 2016-01 Printed in Germany  
© Pilz GmbH & Co. KG, 2016

CMSE® InduraNET p®, PAS4000®, PAScal®, PASconfig®, Pilz®, PIT®, PLID®, PMCPirotege®, PMCiendo®, PMD®, PMI®, PNOZ®, Prime®, PSS®, PSEN®, PSS®, PVS®, SafetyBUS p®, SafetyNET p®, THE SPIRIT OF SAFETY® are registered and protected trademarks of Pilz GmbH & Co. KG in some countries. We would point out that product features may vary from the details stated in this document, depending on the status at the time of publication and the scope of the equipment. We accept no responsibility for the validity, accuracy and entirety of the text and graphics presented in this information. Please contact our Technical Support if you have any questions.